

Please check the examination details below before entering your candidate information

Candidate surname	Other names
-------------------	-------------

Centre Number	Candidate Number
---------------	------------------

**Pearson Edexcel International Advanced Level**

Time 2 hours	Paper reference <b>WGE03/01</b>
--------------	---------------------------------

**Geography**

**International Advanced Level**

**PAPER 3: Contested Planet**

<b>You must have:</b> Resource Booklet (enclosed)	Total Marks
--	-------------

### Instructions

- Use **black** ink or ball-point pen.
- **Fill in the boxes** at the top of this page with your name, centre number and candidate number.
- Answer **all** questions in Section A, **ONE** question in Section B and **ONE** question in Section C.
- Answer the questions in the spaces provided  
– *there may be more space than you need.*

### Information

- The total mark for this paper is 90.
- The marks for **each** question are shown in brackets  
– *use this as a guide as to how much time to spend on each question.*
- Calculators may be used.

### Advice

- Read each question carefully before you start to answer it.
- Check your answers if you have time at the end.

Turn over ►

R66608A

©2022 Pearson Education Ltd.

Q:1/1/1/1/1

## SECTION A

### Compulsory topics and synoptic question

Answer ALL questions in this section. Write your answers in the spaces provided.

#### A1: Atmosphere and Weather Systems

- 1 (a) Using Figure 1, explain the possible causes and impacts of the monsoon rainfall anomalies shown.

(10)

DO NOT WRITE IN THIS AREA

DO NOT WRITE IN THIS AREA

DO NOT WRITE IN THIS AREA

DO NOT WRITE IN THIS AREA

DO NOT WRITE IN THIS AREA

DO NOT WRITE IN THIS AREA

(b) Assess the importance of governance in the successful management of extreme weather hazards such as droughts and tropical cyclones.

(15)



DO NOT WRITE IN THIS AREA

DO NOT WRITE IN THIS AREA

DO NOT WRITE IN THIS AREA

DO NOT WRITE IN THIS AREA

DO NOT WRITE IN THIS AREA

DO NOT WRITE IN THIS AREA



DO NOT WRITE IN THIS AREA

DO NOT WRITE IN THIS AREA

DO NOT WRITE IN THIS AREA

DO NOT WRITE IN THIS AREA

DO NOT WRITE IN THIS AREA

DO NOT WRITE IN THIS AREA

(Total for Question 1 = 25 marks)

## A2: Biodiversity Under Threat

- 2 Using Figure 2, suggest reasons for the differences in the percentage of terrestrial protected areas.

(10)

DO NOT WRITE IN THIS AREA

DO NOT WRITE IN THIS AREA

DO NOT WRITE IN THIS AREA

DO NOT WRITE IN THIS AREA

DO NOT WRITE IN THIS AREA

DO NOT WRITE IN THIS AREA

DO NOT WRITE IN THIS AREA

DO NOT WRITE IN THIS AREA

DO NOT WRITE IN THIS AREA

DO NOT WRITE IN THIS AREA

DO NOT WRITE IN THIS AREA

DO NOT WRITE IN THIS AREA

(Total for Question 2 = 10 marks)

### Synoptic question

You should use relevant knowledge and understanding from Unit 1 and Unit 3 (topics A1 and A2) to answer this question.

**3** To what extent does globalisation contribute to destruction of biodiversity?

(15)

DO NOT WRITE IN THIS AREA

DO NOT WRITE IN THIS AREA

DO NOT WRITE IN THIS AREA

DO NOT WRITE IN THIS AREA

DO NOT WRITE IN THIS AREA

DO NOT WRITE IN THIS AREA



DO NOT WRITE IN THIS AREA

DO NOT WRITE IN THIS AREA

DO NOT WRITE IN THIS AREA

DO NOT WRITE IN THIS AREA

DO NOT WRITE IN THIS AREA

DO NOT WRITE IN THIS AREA

(Total for Question 3 = 15 marks)

**TOTAL FOR SECTION A = 50 MARKS**



## SECTION B

### Resource options

Answer ONE question in this section – EITHER Question 4 OR Question 5.

Indicate which question you are answering by marking a cross ☐. If you change your mind, put a line through the box ☒ and then indicate your new question with a cross ☐.

Write your answers in the spaces provided.

If you answer Question 4 put a cross in the box ☐.

#### B1: Energy Security

- 4 (a) Using Figure 3, suggest possible reasons for changes to Belgium's primary energy sources between 1990 and 2020.

(5)

- (b) Using named examples, assess the importance of international energy pathways for the energy security of countries.

(15)

DO NOT WRITE IN THIS AREA

DO NOT WRITE IN THIS AREA

DO NOT WRITE IN THIS AREA

DO NOT WRITE IN THIS AREA

DO NOT WRITE IN THIS AREA

DO NOT WRITE IN THIS AREA



DO NOT WRITE IN THIS AREA

DO NOT WRITE IN THIS AREA

DO NOT WRITE IN THIS AREA



DO NOT WRITE IN THIS AREA

DO NOT WRITE IN THIS AREA

DO NOT WRITE IN THIS AREA





DO NOT WRITE IN THIS AREA

DO NOT WRITE IN THIS AREA

DO NOT WRITE IN THIS AREA

DO NOT WRITE IN THIS AREA

DO NOT WRITE IN THIS AREA

DO NOT WRITE IN THIS AREA

(Total for Question 4 = 20 marks)



If you answer Question 5 put a cross in the box ☐ .

**B2: Water Conflicts**

- 5 (a) Using Figure 4, suggest possible reasons for changes to Singapore's water sources between 1990 and 2020.

(5)

- (b) Using named examples, assess the importance of major engineering schemes in making water supplies secure.

(15)



DO NOT WRITE IN THIS AREA

DO NOT WRITE IN THIS AREA

DO NOT WRITE IN THIS AREA

DO NOT WRITE IN THIS AREA

DO NOT WRITE IN THIS AREA

DO NOT WRITE IN THIS AREA



DO NOT WRITE IN THIS AREA

DO NOT WRITE IN THIS AREA

DO NOT WRITE IN THIS AREA

DO NOT WRITE IN THIS AREA

DO NOT WRITE IN THIS AREA

DO NOT WRITE IN THIS AREA

(Total for Question 5 = 20 marks)

**TOTAL FOR SECTION B = 20 MARKS**

## SECTION C

### Economic and Political options

Answer ONE question in this section – EITHER Question 6 OR Question 7.

Indicate which question you are answering by marking a cross in the box ☒. If you change your mind, put a line through the box ☒ and then indicate your new question with a cross ☒.

Write your answers in the spaces provided.

If you answer Question 6 put a cross in the box ☐ .

#### C1: Superpower Geographies

- 6 To what extent are tensions over superpower spheres of influence a threat to geopolitical stability and economic prosperity?

(20)

DO NOT WRITE IN THIS AREA

DO NOT WRITE IN THIS AREA

DO NOT WRITE IN THIS AREA

DO NOT WRITE IN THIS AREA

DO NOT WRITE IN THIS AREA

DO NOT WRITE IN THIS AREA



DO NOT WRITE IN THIS AREA

DO NOT WRITE IN THIS AREA



DO NOT WRITE IN THIS AREA

DO NOT WRITE IN THIS AREA

DO NOT WRITE IN THIS AREA

DO NOT WRITE IN THIS AREA

DO NOT WRITE IN THIS AREA

DO NOT WRITE IN THIS AREA

(Total for Question 6 = 20 marks)



If you answer Question 7 put a cross in the box ☐ .

**C2: Bridging the Development Gap**

- 7 To what extent are global development agendas, such as the Millennium Development Goals and Sustainable Development Goals, successfully narrowing the development gap?

(20)



DO NOT WRITE IN THIS AREA

DO NOT WRITE IN THIS AREA

DO NOT WRITE IN THIS AREA

DO NOT WRITE IN THIS AREA

DO NOT WRITE IN THIS AREA

DO NOT WRITE IN THIS AREA



DO NOT WRITE IN THIS AREA

DO NOT WRITE IN THIS AREA

DO NOT WRITE IN THIS AREA

DO NOT WRITE IN THIS AREA

DO NOT WRITE IN THIS AREA

DO NOT WRITE IN THIS AREA

(Total for Question 7 = 20 marks)

**TOTAL FOR SECTION C = 20 MARKS**  
**TOTAL FOR PAPER = 90 MARKS**



DO NOT WRITE IN THIS AREA

DO NOT WRITE IN THIS AREA

DO NOT WRITE IN THIS AREA

DO NOT WRITE IN THIS AREA

DO NOT WRITE IN THIS AREA

DO NOT WRITE IN THIS AREA

BLANK PAGE





DO NOT WRITE IN THIS AREA

DO NOT WRITE IN THIS AREA

BLANK PAGE

DO NOT WRITE IN THIS AREA

DO NOT WRITE IN THIS AREA



DO NOT WRITE IN THIS AREA

DO NOT WRITE IN THIS AREA

DO NOT WRITE IN THIS AREA

**BLANK PAGE**





# Pearson Edexcel International Advanced Level

Time 2 hours

Paper  
reference

**WGE03/01**

## Geography

International Advanced Level

**PAPER 3: Contested Planet**

### Resource Booklet

Do not return this Booklet with the question paper.

Turn over ►

**R66608A**

©2022 Pearson Education Ltd.

Q:1/1/1/1/1

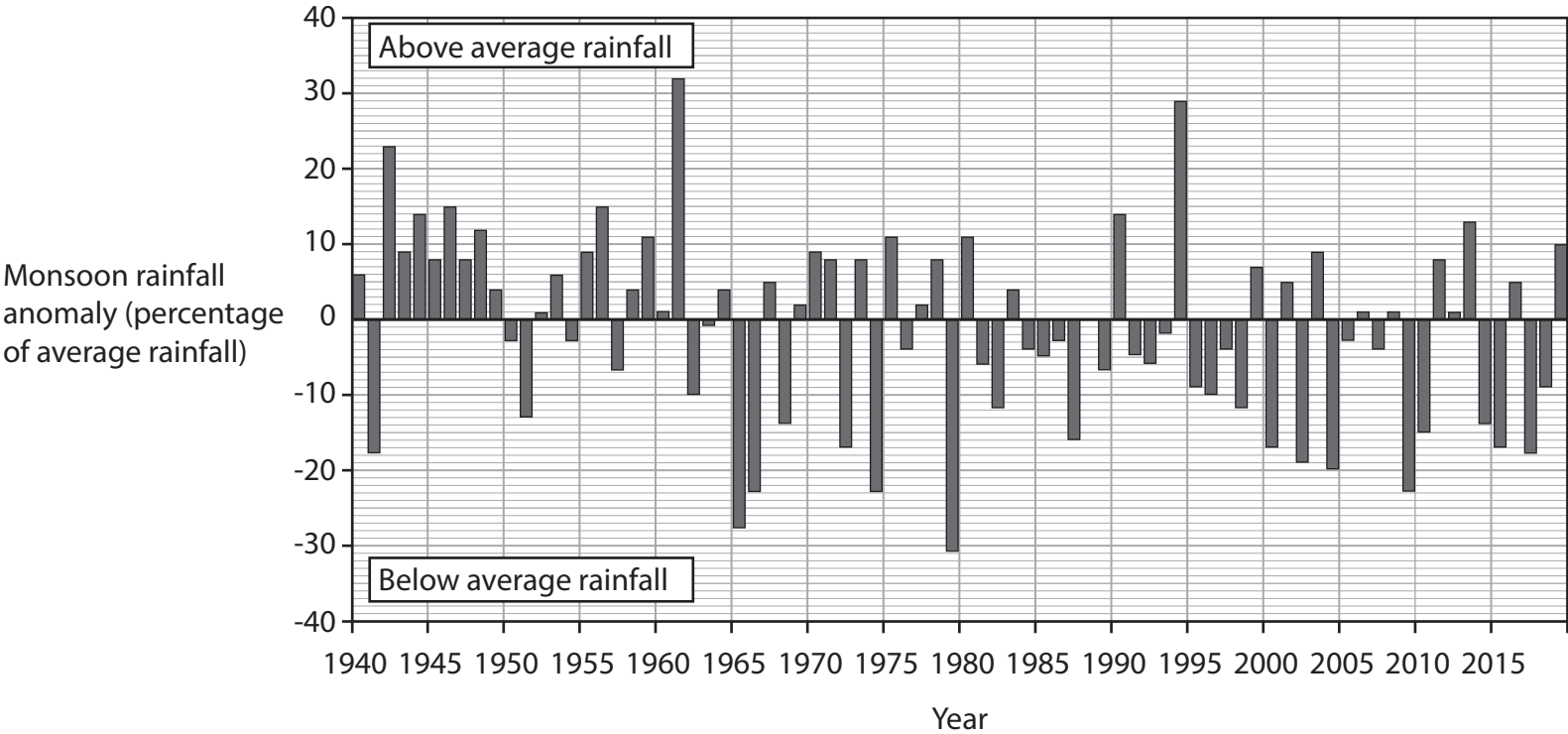


**Pearson**

SECTION A

A1: Atmosphere and Weather Systems

The following resource relates to Question 1 (a).



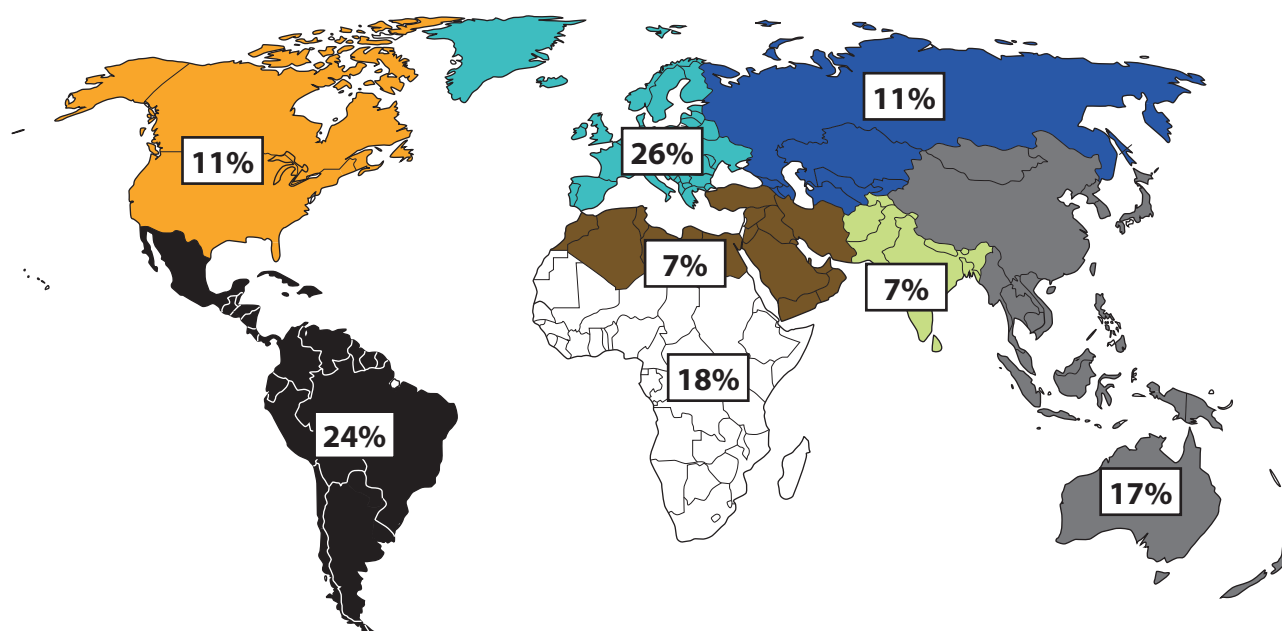
An anomaly measures variation from the expected average annual rainfall.

Figure 1

Annual monsoon rainfall anomaly in India 1940 to 2019

## A2: Biodiversity Under Threat

The following resource relates to Question 2.



### Key

	East Asia and the Pacific
	Europe
	Latin America and the Caribbean
	North America
	Middle East and North Africa
	Russia and Central Asia
	South Asia
	Sub-Saharan Africa

Terrestrial protected areas include national parks, sustainable reserves, biosphere reserves and conservation areas.

**Figure 2**

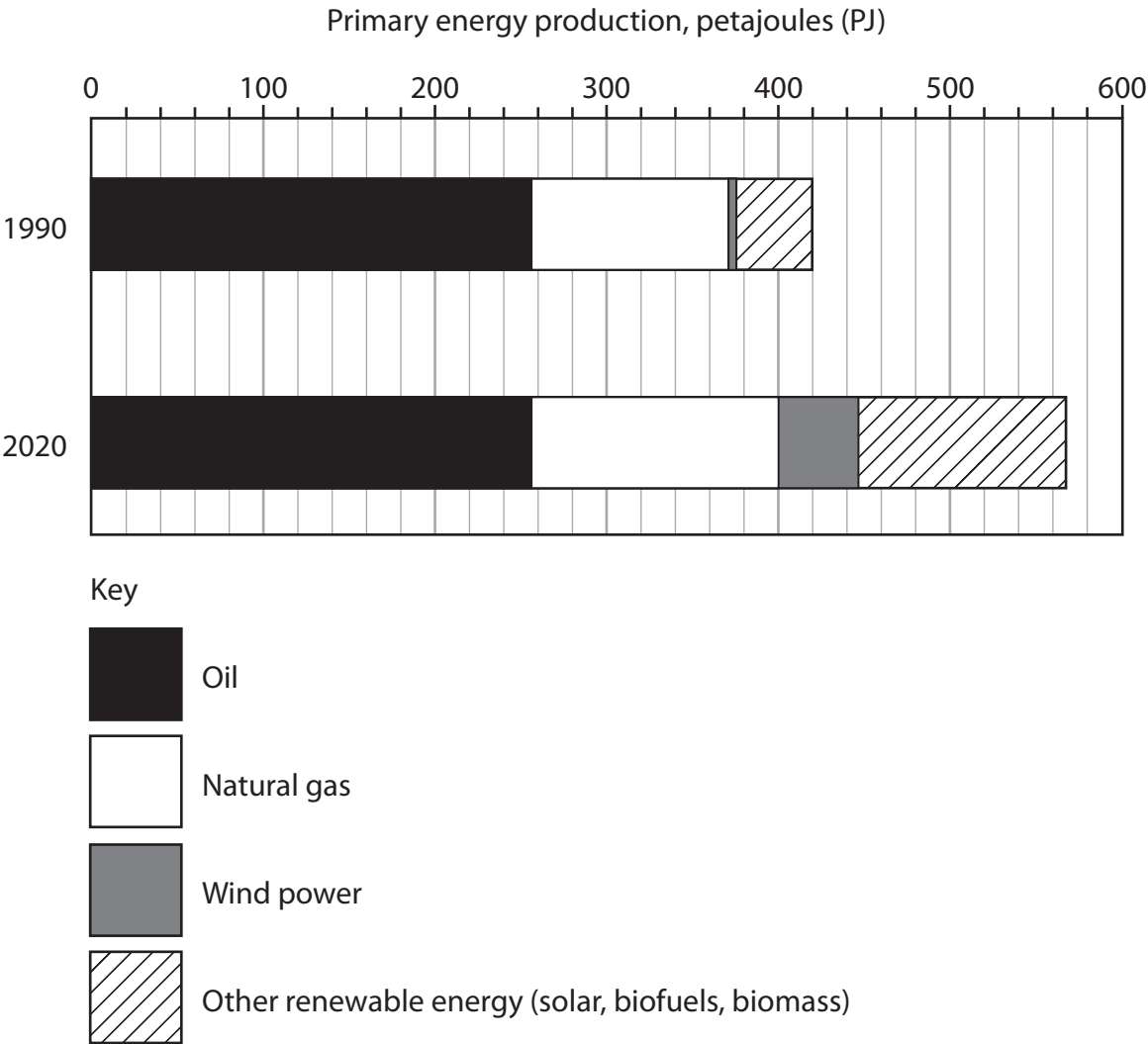
**Terrestrial protected areas (percentage of total land area) in 2018 by global region**



SECTION B

B1: Energy Security

The following resource relates to Question 4 (a).

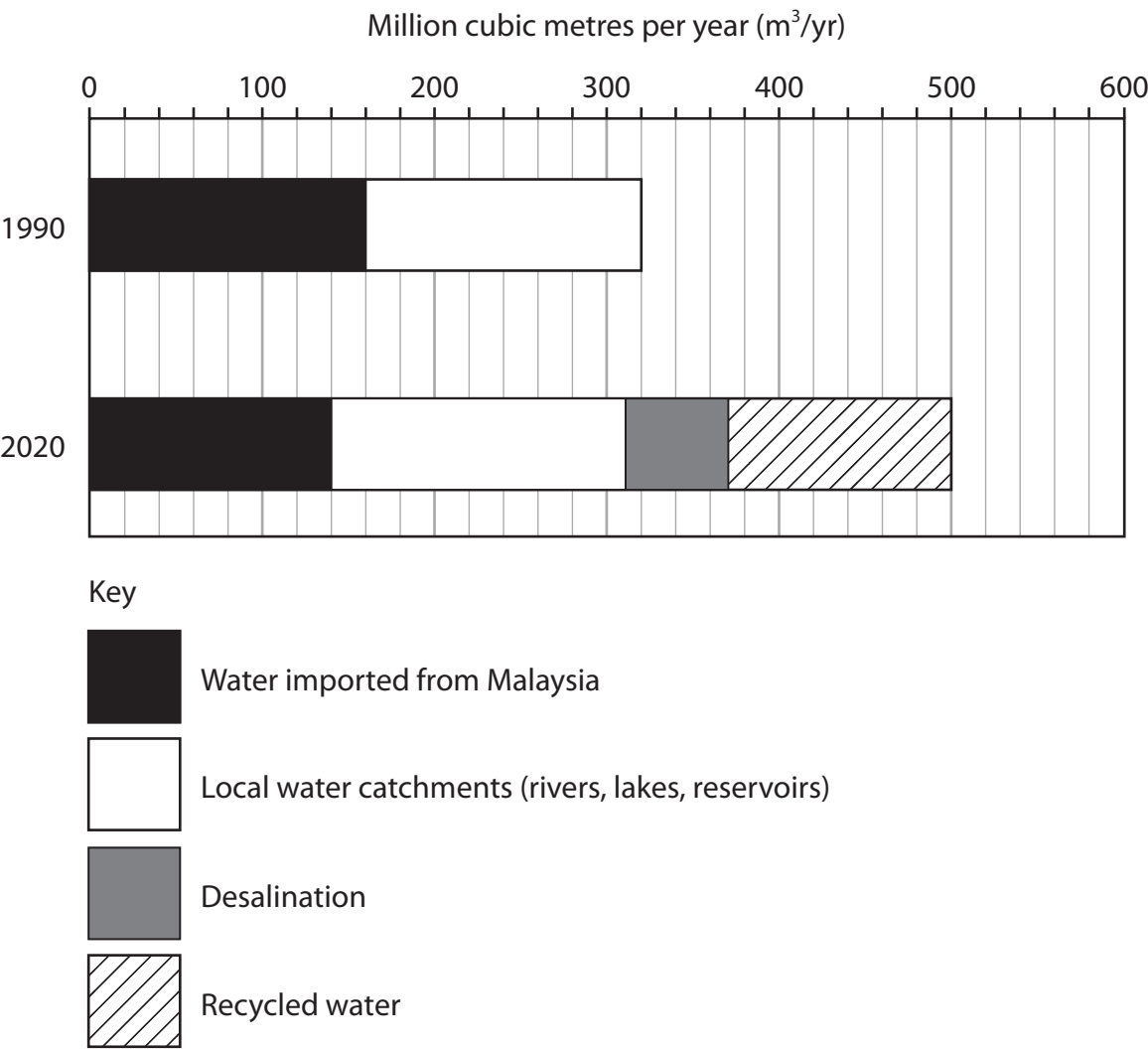


**Figure 3**  
**Belgium's primary energy sources in 1990 and 2020**



**B2: Water Conflicts**

**The following resource relates to Question 5 (a).**



**Figure 4**  
**Singapore's water sources in 1990 and 2020**



**BLANK PAGE**



**BLANK PAGE**



**BLANK PAGE**

### **Acknowledgments**

Pearson Education Ltd. gratefully acknowledges all following sources used in preparation of this paper:

Figure 1 adapted from: [https://mausam.imd.gov.in/imd\\_latest/contents/cs\\_anomaly\\_timeseries\\_temp\\_rainfall.php](https://mausam.imd.gov.in/imd_latest/contents/cs_anomaly_timeseries_temp_rainfall.php)

Figure 2 adapted from: <https://data.worldbank.org/indicator/ER.LND.PTLD.ZS>

Figure 3 adapted from: <https://www.iea.org/countries/belgium>

Figure 4 adapted from: <https://www.pub.gov.sg/>

